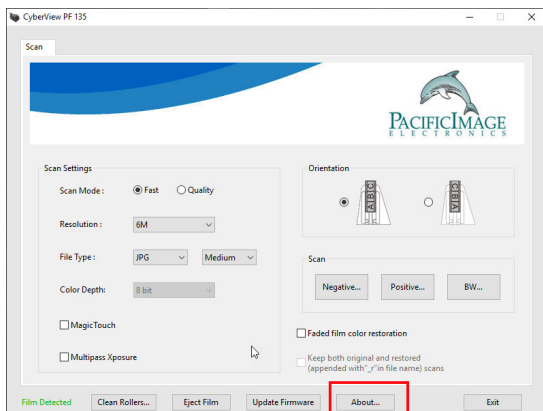
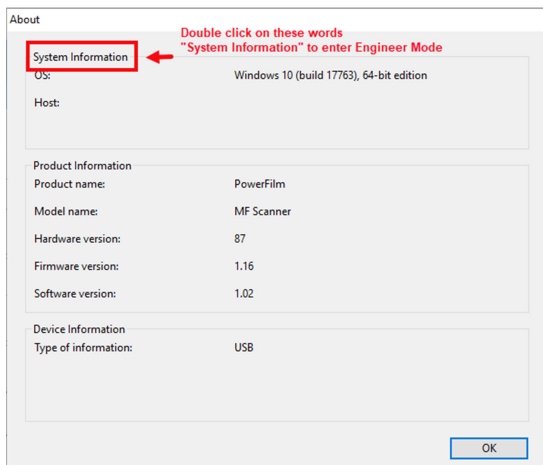


Entering Engineer Mode to provide diagnostic Scan data

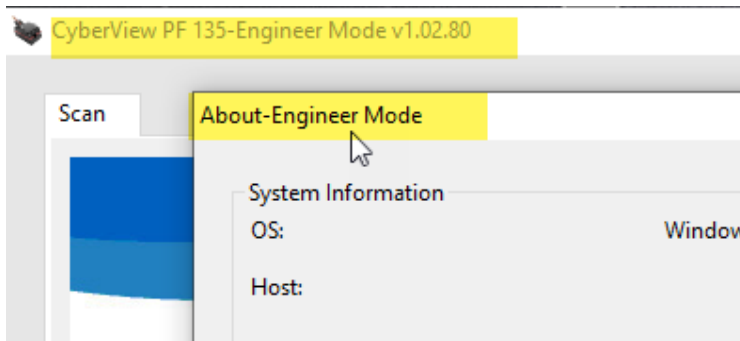
Launch the CyberView PF 135 application then click on (About) to access the About Dialog.



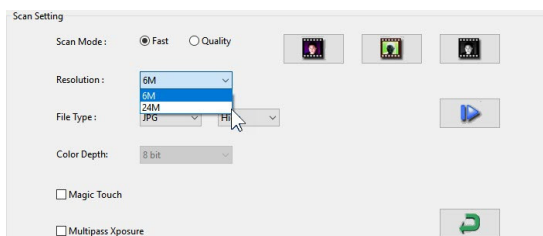
1. Double Click on the words “System Information”



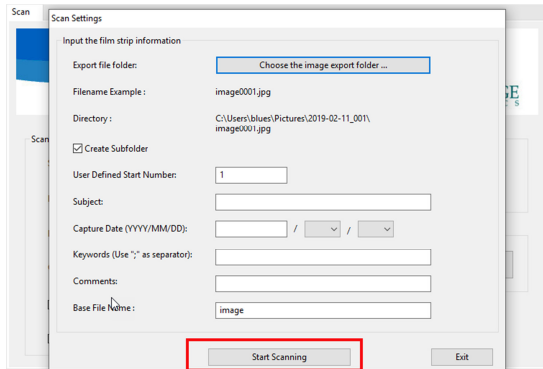
2. You will now be in “ Engineer Mode” , you will see the screen as follows, Click OK



3. Next set the scan Fast 6M mode

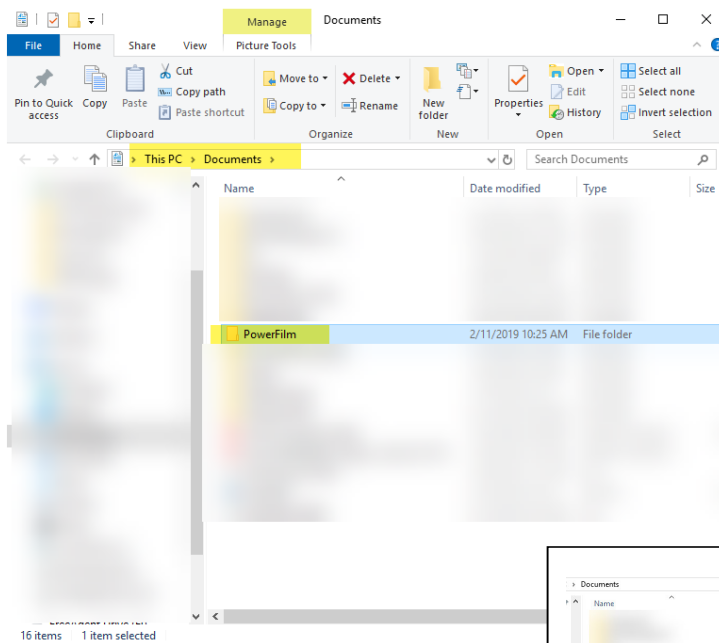


4. Scan the image



5. Once scan is complete, Close CyberView PF 135, Locate the PowerFilm folder. Open the Documents folder. (VISTA, 7/8 **Start – Documents**, 10 **Start – File Explorer – Documents etc.**)

Go to C:\Users\User Account\ Documents.



Right Click on **PowerFilm** and left click on **Send to...Compressed (zipped) Folder** – Send this folder to us, if the file is TOO LARGE to email please use a file sharing website such as **Dropbox** or Opentext **“Hightail”** to send it

