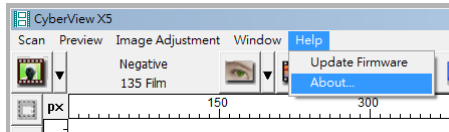
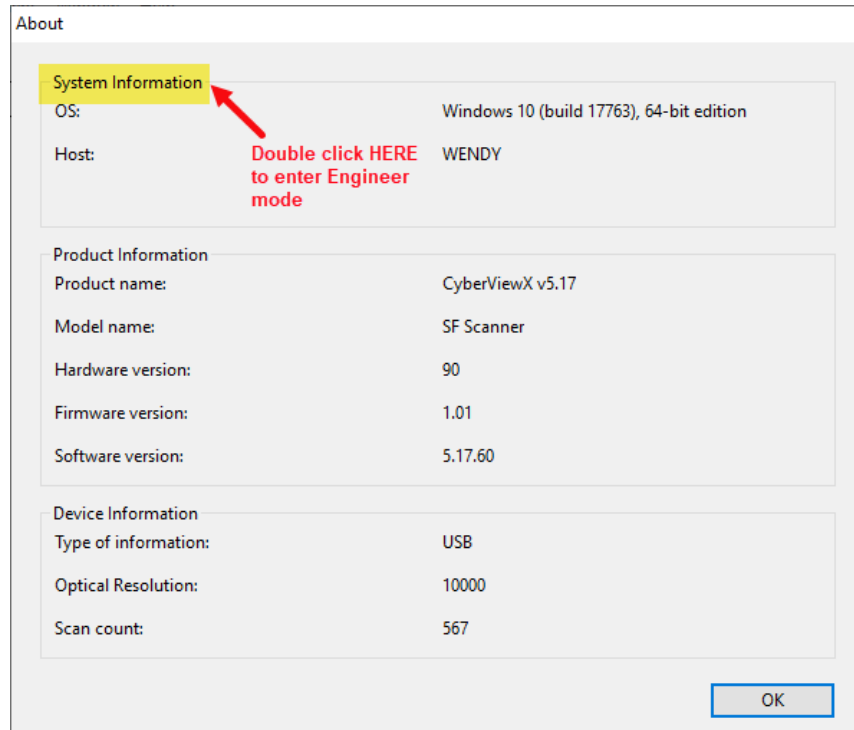


WINDOWS: (Mac directions see page 3)

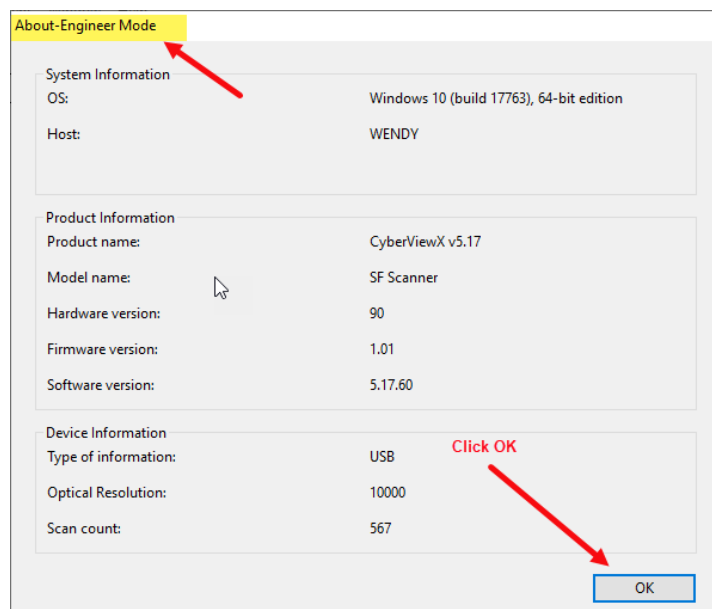
1. Launch the CyberViewX 5 application then click on (Help – About) to access the About Dialog.



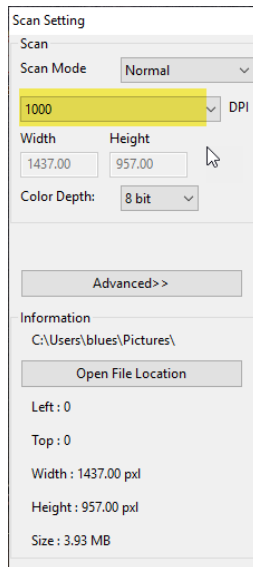
2. Double Click on the words “System Information”



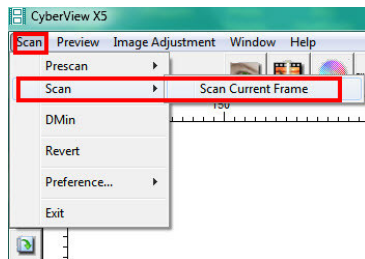
3. You will now be in “ Engineer Mode” , you will see the screen as follows, Click OK



4. Next set the scan dpi to 2000-2500 dpi (Scan 1 image)



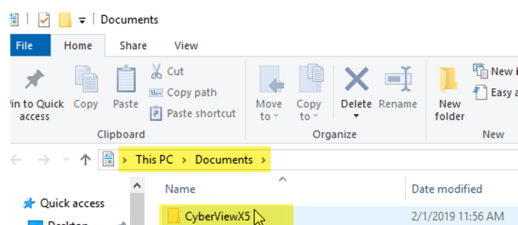
5. Select Scan, SCAN CURRENT FRAME



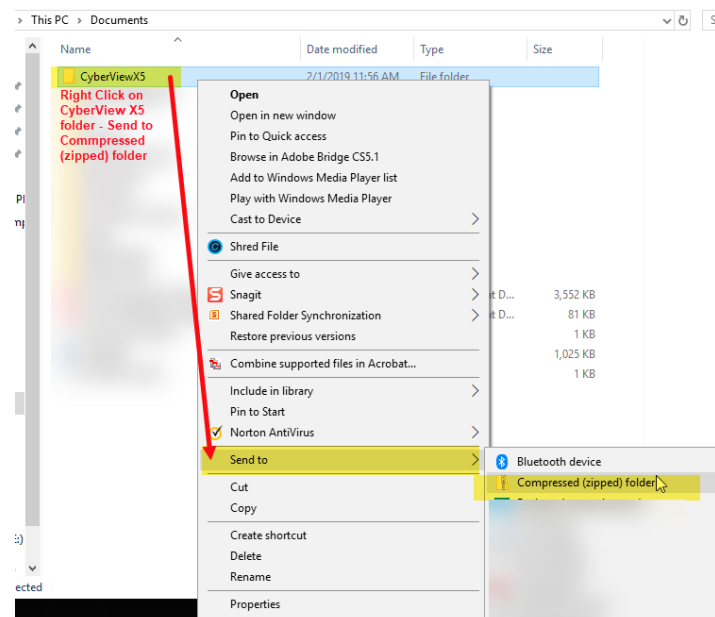
6. Once scan is complete, Close CyberViewX5, Locate the CyberViewX folder.

Open the Documents folder. (VISTA, 7/8 **Start – Documents**, 10 **Start – File Explorer - Documents**)

Go to C:\Users\User Account\ Documents.

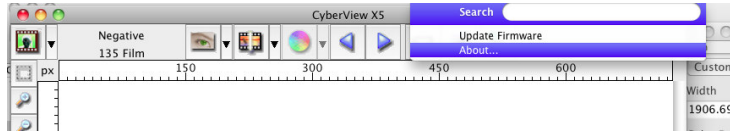


Right Click on **CyberViewX** and left click on **Send to...Compressed (zipped) Folder** – Send this folder to us, if the file is TOO LARGE to email please use a file sharing website such as **Dropbox** or Opentext “**Hightail**” to send it



Mac :

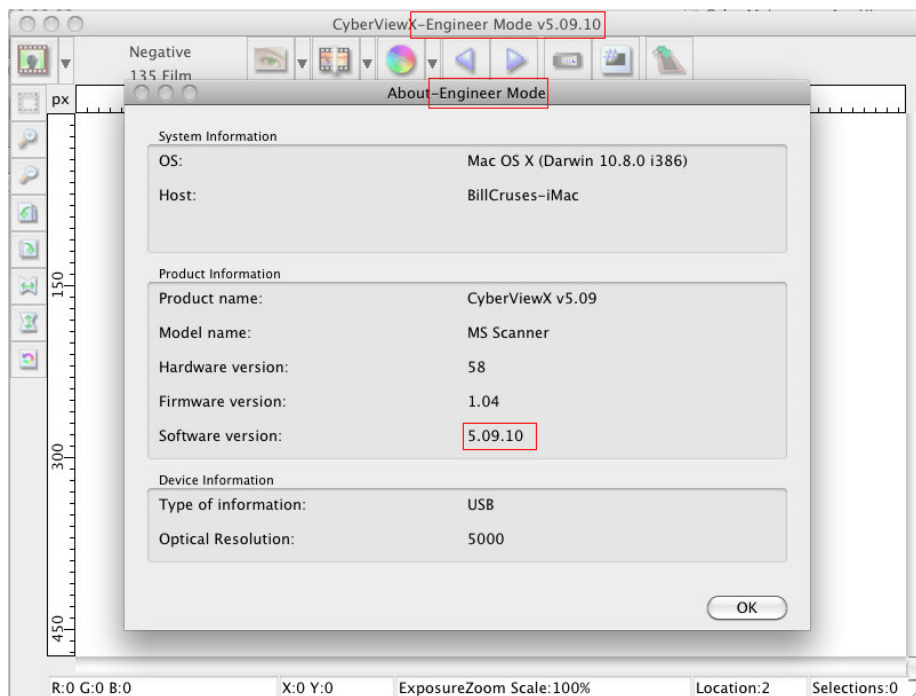
1. Run CyberViewX 5. On the **Help** menu, click **About**.



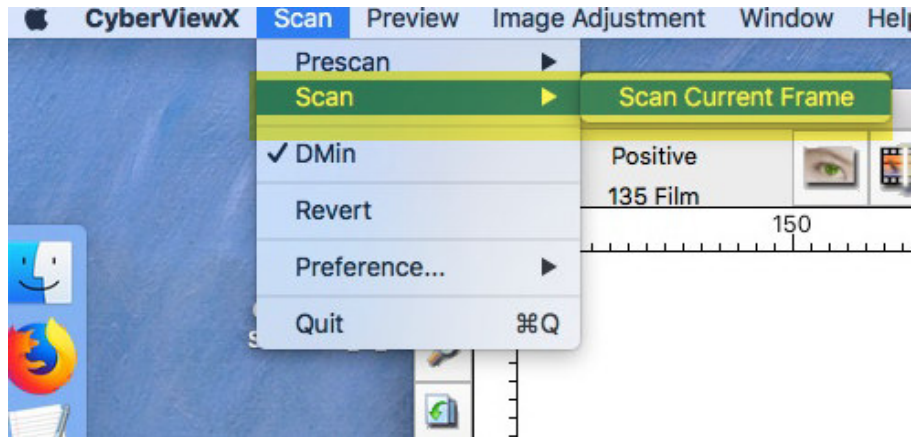
2. Next double click on the words “System Information”



3. You will access Engineer Mode .



4. Next select Scan – Scan Current Frame,



5. When completed Close CyberViewX 5 application

6. Locate the CyberviewX Folder (under your user name – CyberviewX), then compress the directory of CyberViewX and send it to us. To compress the file- Highlight the CyberviewX folder then go to File – Compress, if the file is TOO LARGE to email please use a file sharing website such as **Dropbox** or Opentext **“Hightail”**

