
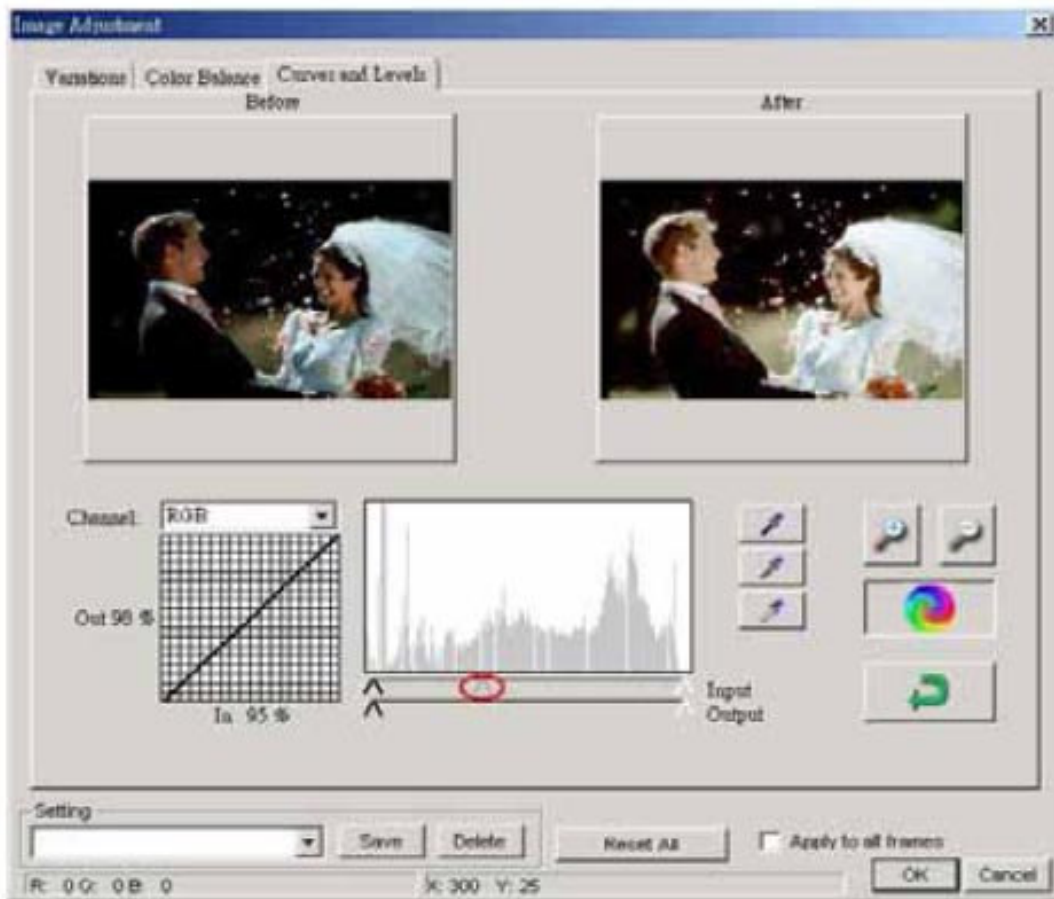


Correcting the Image Using the Image Adjustment window

1. Open Cyberview, Prescan an image, click on the Image Adjustment tool (rainbow color wheel)

2. Click on the 3rd tab Curves and Levels tool, you can adjust images to be Lighter or Darker using the default color channel settings of RGB to adjust the image (results appear in the After image)
3. Locate the Input sliders (3 upside down letter V's) the gray V in the center can be slid to the left or right to lighten/darken the image depending on which way it is slid, you can see the result in the After image

EXAMPLE: if you have an image say with too much red, over on the left side of this Curves and levels window you can click on the RGB channel and select Red (you will see Red, Green and Blue color options selecting any of these that need adjusting) you can use the same gray upside down letter V slider on the input bar to adjust each color independently by moving the slider left or right and the results appear in the After image. Once you are satisfied with the After image appearance you can click OK at the bottom of this window and your settings will be sent to the scanner for adjustments to be made to the final scanned image.



When the scanner produces images that are too dark

Increase Exposure Settings

1. First go to Scan - Preference in Cyberview click on Advanced settings and make sure Auto Exposure is not checked
2. Next on the Cyberview menu bar go to Window - Exposure settings and try increasing the levels for RGB anywhere from to 150%-200% click Prescan and check the results
3. When you achieve the desired results, check the Set as default box and then click Close.
4. Please also try using the [Curves & Levels adjustment directions](#) before asking for assistance

If the scanner still fails to produce a useable image contact Technical support support@scanace.com

Providing the following info:
Description of the problem?

Registration info:

Name:

Phone:

Address:

(Sorry No PO Boxes)

City:

State:

Zip:

Email:

Operating System:

Product Name:

Place of Purchase:

Date of purchase:

Serial #:

(1/2 inch high barcode sticker on the back or the bottom of the unit)