

# User Manual

PrimeHisto XE



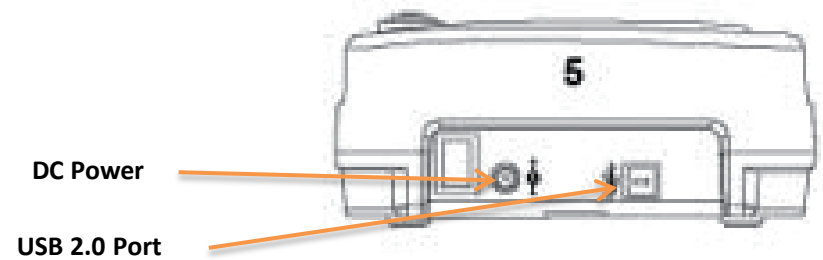
## COMPONENTS

- » PrimeHisto XE Scanner
- » Viewing Window
- » One Touch Scan Button
- » Tissue Slide Holder



## Back

- » DC power
- » USB 2.0 port



# HistoView Software Quick Guide

## INSTALLING SOFTWARE AND DRIVER

- Double click the "HistoView" icon to begin the installation process. Follow the onscreen prompts to complete the installation process.

**NOTE:** Make sure the scanner is NOT connected to the computer during the HistoView driver installation.

## Installing Hardware

- Connect the slide scanner to a power source.
- Locate the power switch on the lower left side of the scanner. Make sure the scanner is **TURNED OFF**.
- Plug the AC adapter into an AC power source
- **FIRST** before plugging it into the scanner.
- Attach the USB cable to the computer using the standard USB adapter end. Attach the USB adapter end of the cable to back panel of the scanner.



## HistoView Software Quick Guide (2)

To Scan with Tissue Slide Holder

- Load the tissue slides (1"x 3" )into the tissue slide holder
- Insert the tissue slide holder into the scanner with the arrow facing upwards
- Insert to holder into the scanner from the left or the right side



# How to Scan Histology Slide

## STEP 1 – Acquire Driver

(For PC User)

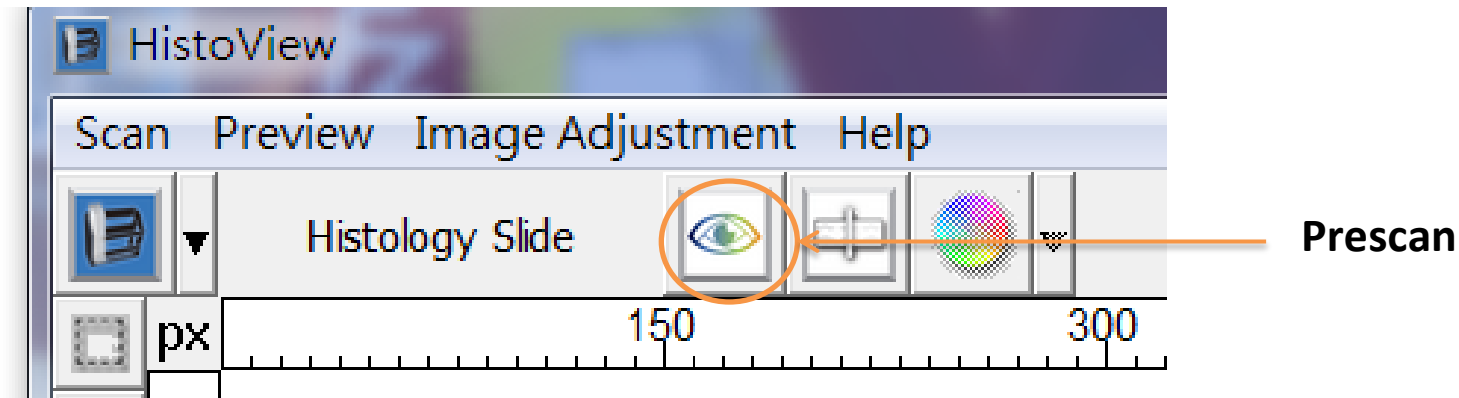
Open HistoView from Start – All Programs –HistoVlew

(For MAC User)

Open Macintosh Hard drive – Applications –HistoVlew

## STEP 2– Optional Prescan

Select the Scan “Prescan Histology Slide“ to prescan the slide currently loaded into the scanner or select the “Prescan“ icon from the toolbar to prescan tissue sample  
Pre-Scanning should be used to manually adjust color/edit settings for each slide before doing the final scan. It’s possible to set different settings for each slide to be scanned.



## How to Scan Histology Slide(2)

### STEP 3 – Set Scan Settings

- **Resolution**

The default scanning resolution is 1000dpi, additional resolution options are listed below.

**Notice:** Higher scanning resolutions result in greater scanning time and hard disk space requirements.

- **Color Depth**

Choose between 8 and 16bit. A higher color depth setting will result in a larger range of colors in the final scanned image.

The Film Scanner color depth is 48 bit true color. The scanning software has the capability of selecting 8 bit color mode or 16 bit color mode when scanning,

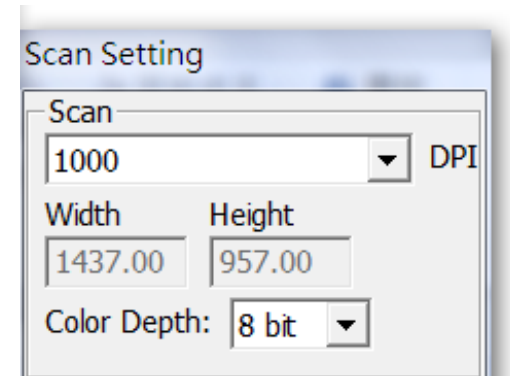
This will produce 24 or 48 bit color images, 8 bits or 16 bits per Red, Green and Blue color channels.

**NOTE:** Selecting JPG file format automatically converts the images to 8 bit when saved

Example:

8 bit mode = 8 Red, 8 Green, and 8 Blue for a total of 24 bit color

16 bit mode = 16 Red, 16 Green, and 16 Blue for a total of 48 bit color



## How to Scan Histology Slide(3)

### STEP 3 – Set Scan Settings (*continued...*)

- **Exposure Settings**

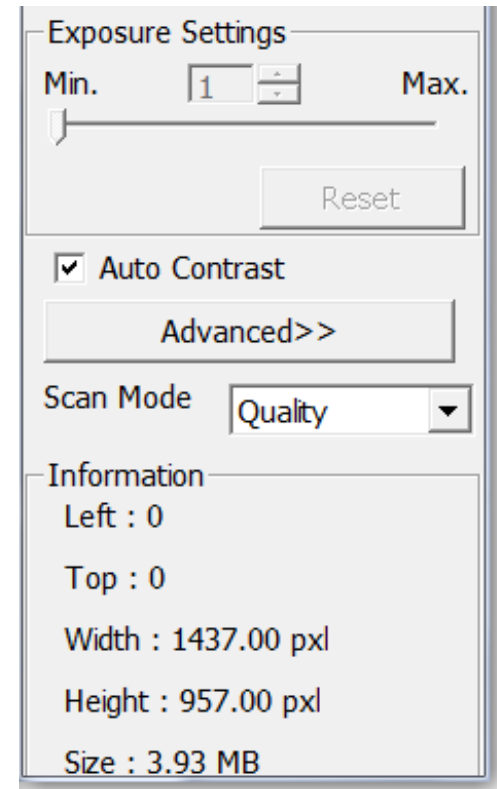
Exposure time can be set from 1(Min) to 10(Min). Different histology slide samples will use different exposure setting to simulation dark field or light field

- **Auto Contrast**

The HistoView analyzes the data and automatically adjusts the setting for the white and black points

- **Scan Mode**

Normal mode produces a scan in jpeg format while Quality produces a non-compressed, “loss-less” TIFF image.





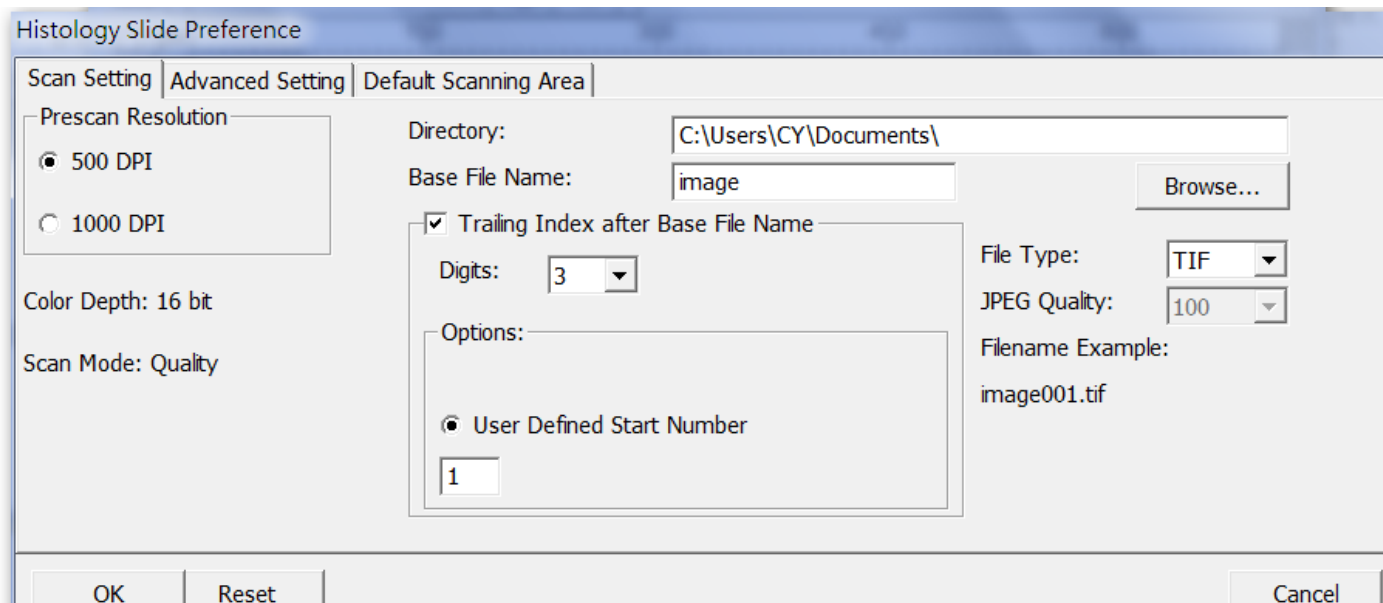
## How to Scan Histology Slide(4)

### STEP 4 – Set Scan Preferences

- Select “Scan” - Preference – Histology Slide
- “Prescan Resolution” - Default pre-scan resolution.
- \* “Color Depth” – Default color depth while scanning.
- \* “Scan Mode” – Default scan mode while scanning.

### Configuring Scan Preferences

1. Select Browse and choose the designated folder to save the scanned image to.
2. Enter the file name.
3. Trailing Index after Base File Name Digits: Defines the length of the file name and numbering sequence up to 6 digits Example image1 or mage000001.



## How to Scan Histology Slide(5)

### STEP 4 – Set Scan Preferences (*continued...*)

Default Scanning Area

Adjust the cropping area as well as adjust the “Scan Offset” setting to move the image position of slide

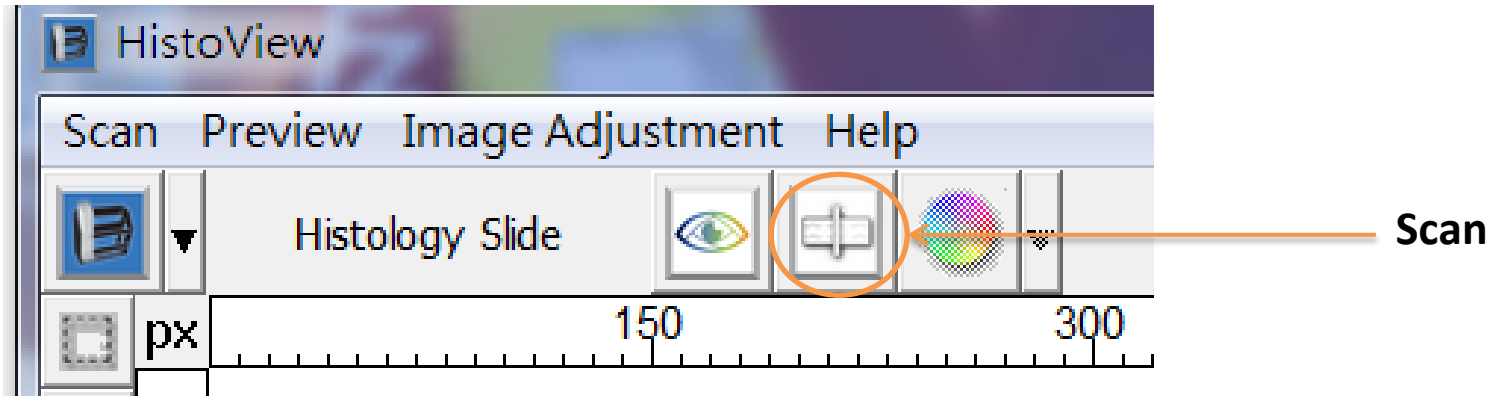
The screenshot shows a software dialog box titled "Histology Slide Preference" with three tabs: "Scan Setting", "Advanced Setting", and "Default Scanning Area". The "Default Scanning Area" tab is active. It contains a checkbox for "Enable user setting for auto-crop" which is unchecked. Below this are two rows of settings. The first row is for "Scan Size", with "Width" set to 3.649980 and "Height" set to 2.430780, and a "Default" button. The second row is for "Scan Offset", with "Offset X" set to 0.000000 and "Offset Y" set to 0.000000, and a "Default" button.

	Width	Height	
Scan Size	3.649980	2.430780	Default
Scan Offset	Offset X: 0.000000	Offset Y: 0.000000	Default

## How to Scan Histology Slide(6)

### STEP 5 – Scan

Scan - Scan Current Frame or the “Scan” icon from the toolbar



### STEP 6 – Exit

Select “Scan > Exit” to close the driver.

Scanned image files can be open/edited with any image editing software.

User's Manual

PrimeHisto XE

Made in Taiwan

PACIFIC IMAGE ELECTRONICS Co., Ltd.

[www.scanace.com.tw](http://www.scanace.com.tw)