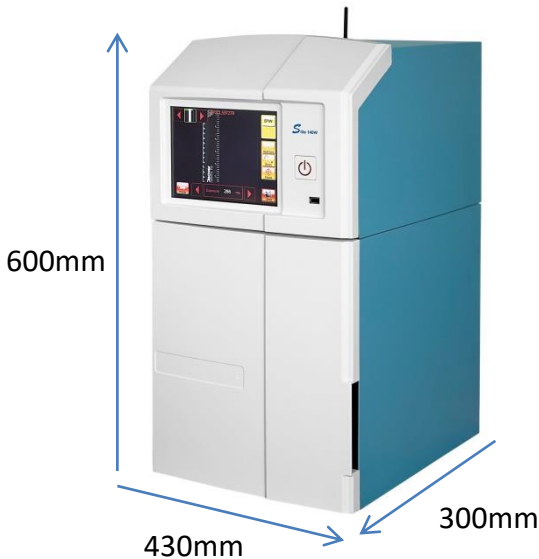


Slite 600 Gel Imager

Affordable gel doc
system with 6M camera



Features:

- 6M Resolution camera
- Multiple light sources: UV, Cyan, Epi white & white backlight
- UV light for fluorescent dye-stained DNA (ex. EtBr) / protein (ex. SYPRO Ruby) gel imaging
- Cyan light for safe dye-stained gel
- Easily interchangeable light sources
- Standalone operation with no PC required
- Wire connection available for system operation/image capture

2 simple steps to change light sources!

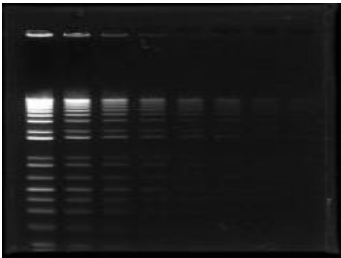
1. Place the white light or Epi Cyan light panel on top of UV transilluminator.
2. Connect light panel to UV transilluminator and power on.



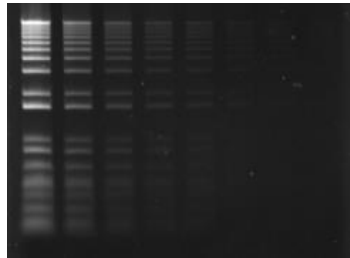
Slite 600 Gel Imager

Affordable gel doc
system with 6M camera

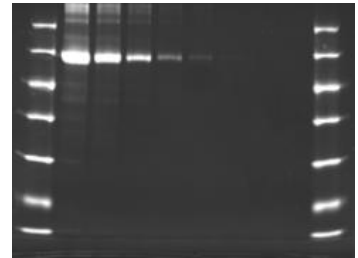
UV, Cyan, White backlight and Epi white light applications



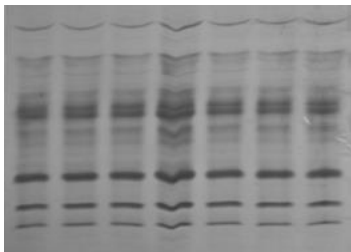
ECO Safe Stain
(Cyan light)



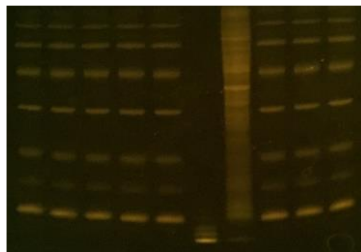
DNA Agarose EtBr Stain
(UV light)



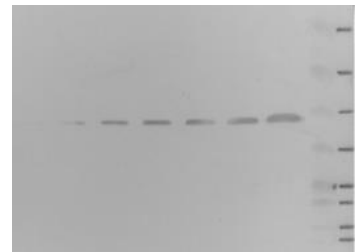
SDS-PAGE SYPRO Ruby Stain
(UV light)



SDS-PAGE CBB Stain
(White backlight)



SDS-PAGE Lighting Red Stain
(Cyan light)



HRP/DAB Western Blot
(Epi white light)

Slite 600 Gel Imager

Affordable gel doc
system with 6M camera

Specification

	Slite 600
Camera sensor	CMOS
Image Resolution	6 Mega pixels (3096 x 2080)
Lens Type	6 x Zoom Lens / Motor-driven Lens
Focus	Auto Focus, Motorized
Saving Bit Depth	8, 16 bits / channel
Exposure Time	0.001 to 10 sec
UV transilluminator. 302nm	V
Epi Cyan 505nm	NA
White Light Panel	V
White Epi Light	V
View Area	20 x 16 cm
Filter Turret	Motor-Driven, 6 position
Display Panel	8" TFT LCD touch screen / standalone operation
Image Format	TIFF, JPEG, BMP
I / O Port	USB: storage / printing; Ethernet
Dimension (W x H x D))	300 x 430 x 600 mm (11.81 x 16.93 x 23.62 inch)
Weight	30 kg (70.75 lb)